



Fern, Moss, Shale
CABLED CAPELET

designed by Teva Durham for
Loop-d-Loop Yarns



SIZES

Small/Medium (Large/X-Large)

KNITTED MEASUREMENTS

Circumference at Hem 48 (56)"/
122 (142) cm

Length 17 (18)"/43 (45.5) cm

MATERIALS

- 2 (3) 1.75oz/50g balls (163yds/147m)
Loop-d-Loop by Teva Durham MOSS
85% extra fine merino wool, 15%
nylon, in #2 Mocha (A)

- 3 (5) 1.75oz/50g balls (81yds/73m)
Loop-d-Loop by Teva Durham FERN
70% wool, 30% nylon, in #4 Mocha (B)

- 3 (5) 1.75oz/50g balls (73yds/66m)
Loop-d-Loop by Teva Durham SHALE,
35% mohair, 30% acrylic, 20% nylon,
15% viscose, in #2 Mocha Mix (C)

- One size 19 (15mm) circular needle
32"/80 cm long

OR SIZE TO OBTAIN GAUGE

- One size 17 (12.75mm) circular
needle 24"/60 cm long
- Stitch markers
- Cable needle
- Yarn needle

GAUGE

6 sts and 9 rows = 4"/10 cm over St st
using one strand each of A, B and C
held together with larger needle

TAKE TIME TO CHECK GAUGE

PATTERN STITCHES

Reverse Stockinette Stitch (Rev St st) Purl on right side, knit on wrong side.

K1, p1 Rib *K1, p1; rep from *.

C2B Dec Slip 1 st to cable needle and hold to back, k2tog, slip st from cable needle back to left-hand needle, k2tog – 2 sts decreased.

C3B Dec Slip 2 sts to cable needle and hold to back, k2tog, slip 1 st from cable needle back to right hand needle, k2tog, slip last 1 st from cable needle back to left-hand needle and k2tog – 3 sts decreased.

NOTE

Capelet is knit in the round from hem up towards collar.

CAPELET

With one strand each of A, B and C held tog and larger needle, cast on 72 (84) sts. Join in a round being careful not to twist sts; place marker for beginning of round and Left Side Seam.

Round 1: (RS) Work in k1, p1 rib over 8 (10) sts, k5, p6, k5, work p1, k1 rib over 12 (16) sts, place marker for Right Side Seam, continue in rib to end of round – 36 (42) sts each for Front and Back.

Round 2: P8 (10), k5, p6, k5, purl to end of round.

Round 3: P7 (9), work Row 1 of 18-st Mock Cable Chart, purl to end of round.

Continue to work Chart in rounds, keeping all other sts in Rev St st, through Round 20 once, then work Rounds 1-18 (20) once.

AT SAME TIME on Round 6 of 2nd repeat of Chart, begin shoulder shaping.

Shape Shoulder

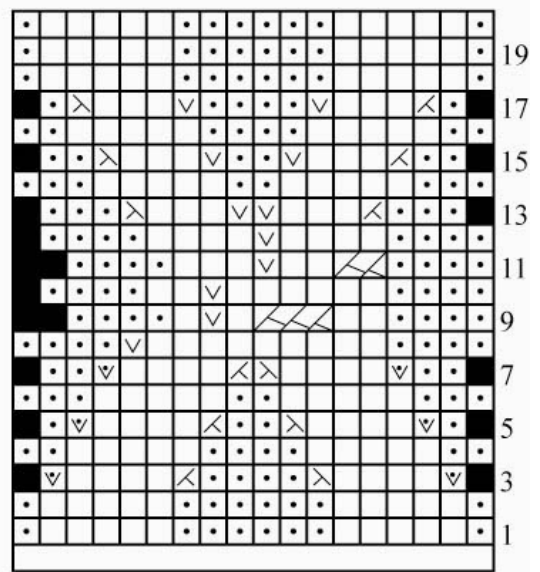
Dec Round: *K2tog, work in pattern until 2 sts before Right Side Seam marker, ssk; rep from * – 68 (80) sts. Repeat Dec Round every round 7 (9) more times – 40 (44) sts. Change to smaller needle and work until Round 18(20) of Mock Cable Chart. Bind off loosely in pattern.

FINISHING

Block lightly. Weave in ends.

MOCK CABLE CHART

- = K on RS
- ◼ = P on RS
- ⊗ = K2tog
- ⊗ = SSK
- ▽ = P1-f/b
- ▽ = K1-f/b
- = No stitch
- ⊗ = C2B Dec
- ⊗ = C3B Dec



18 Stitches

