



"SUMMER SNOW" WRAP

designed by John Brinegar



INTERMEDIATE

SIZE One size

KNITTED MEASUREMENTS

14" x 40"/35.5 cm x 101.5 cm, after blocking

MATERIALS

- 3 skeins Tahki Yarns **COTTON CLASSIC LITE** 100% mercerized cotton (1.75oz/50g; 146yds/135m) in **color #4003 linen white (MC)**
- 1 skein in **color #4017 steel grey (C)**
- One pair size 6 (4mm) needles
- OR SIZE TO OBTAIN GAUGE**
- Contrasting waste yarn for Provisional Cast-On
- Crochet hook size G-6 (4mm)
- One button, 1"/25mm
- Yarn needle

GAUGE

15 sts and 30 rows = 4"/10 cm in Diamond Lace Pattern, after blocking

TAKE TIME TO CHECK GAUGE

SPECIAL TERMS

PROVISIONAL (CROCHET CHAIN) CAST-ON:

Using crochet hook and waste yarn, loosely chain the number of sts needed for the cast on, plus a few extra. Break yarn. Using needle and pattern yarn, pick up and knit 1 st into back bump of first chain. Continue to k1 into back of each chain for the number of sts required. Do not work into remaining chains. When ready to graft or pick up these sts to continue working, using needle required for piece, unravel the crochet chain one st at a time, inserting the needle into the live st.

Picot Bind-Off: Bind off 1 st, * return st from RH needle to LH needle and using Knitted Cast-On method, cast on 2 sts, then bind off 4 sts. Rep from * until all sts are bound off.

ABBREVIATION

SK2P: (Left-leaning double dec) – Slip 1, k2tog, pss0.

PATTERN STITCH

Diamond Lace Pattern (multiple of 12 sts + 3)

Row 1 and all odd number rows (WS) Purl.

Row 2 K2, * [yo, ssk] twice, yo, SK2P, yo, [k2tog, yo] twice, k1; rep from * to last st, k1.

Row 4 K2, * k1, [yo, ssk] twice, k1, [k2tog, yo] twice, k2; rep from * to last st, k1.

Row 6 Rep Row 2.

Row 8 Rep Row 4.

Row 10 Rep Row 2.

Row 12 K1, k2tog, * [yo, k2tog] twice, yo, k1, yo, [yo, ssk] twice, yo, SK2P; rep from * ending last repeat with ssk instead of SK2P, k1.

Row 14 K2, * [k2tog, yo] twice, k3, [yo, ssk] twice, k1; rep from * to last st, k1.

Row 16 Rep Row 12.

Row 18 Rep Row 14.

Row 20 Rep Row 12.

Repeat Rows 1-20 for Diamond Lace Pattern.

SHAWL

With CC, provisionally cast on 147 sts.

(RS) Change to MC and knit 3 rows.

(WS) Change to Diamond Lace Pattern and work Rows 1-20 5 times (100 rows total).

Next Row (WS) K1, purl to last st, k1.

Knit 2 rows.

Cut MC, leaving a 12" tail for crocheting a button loop.

Change to CC and work Picot Bind-Off.

Gently remove provisional cast-on, place live sts on needle and rep Picot Bind-Off with CC.

FINISHING

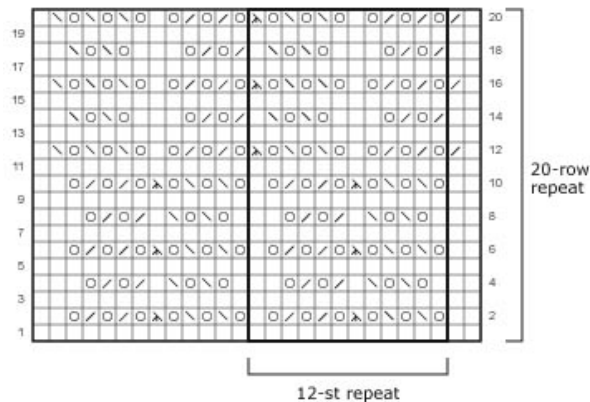
With crochet hook and tail of MC, chain 10 and join with a slip st in the same corner space to make a button loop. Fasten off. Sew button on other end of shawl, opposite button loop.

Weave in ends. Block piece to measurements.

ABBREVIATIONS

dec	decrease(s)(ing)
k	knit
k2tog	knit 2 stitches together
LH	left hand
p	purl
psso	pass slipped stitch over
rep	repeat(s)(ing)
RH	right hand
RS	right side
ssk	slip, slip, knit (decrease)
st	stitch(es)
WS	wrong side
yo	yarn over

DIAMOND LACE PATTERN



KEY

- Knit on RS, purl on WS
- Yo
- K2tog
- Ssk
- SK2P



For matching
 "SUMMER SNOW" Gauntlets,
 look for Tahki Yarns'
 GARDEN VARIETY
 Pattern Collection
 at your LYS or at
www.tahkistacycharles.com

